

NOBODY DOES COLD LIKE



olivo
COLD LOGISTICS
MAKING COLD CHAIN EASY

olivo

in a few words

The leader in logistics solutions for the cold chain:

Used in the four corners of the world for the last 60 years, OLIVO's insulated container and refrigeration systems are the solution for temperature-controlled transport and storage.

Put your trust in OLIVO's expertise and discover the full range of reusable insulated containers, available in sizes ranging from 25 to 1,400 litres, made of polyester, polyethylene or expanded polypropylene (EPP): we're bound to have what you need for your business.

Discover the solutions we have developed for and with our customers: professionals in food distribution, healthcare products, last mile logistics, natural gases, industry, etc.

To help you decide which solution best meets your requirements - insulated containers or a refrigeration system - you can rely on the experts at OLIVO.

Contact us :

contact@olivo.eu | +33 (0) 4 77 90 68 63

Contents

1 ROLL RANGE

2 BAC RANGE

3 BOX RANGE



MADE IN
FRANCE

ROLL RANGE



ROLL RANGE

ROLL all applications



ATP



MADE IN FRANCE



ROLL 130

Ext. diam. in mm (W x D x H):
715 x 600 x 800
Int. diam. in mm (W x D x H):
520 x 420 x 630

Optional equipment



Size:

Roll container



ROLL 220

Ext. diam. in mm (W x D x H):
600 x 800 x 1130
Int. diam. in mm (W x D x H):
430 x 620 x 830

Optional equipment



Size:

**Half Euro-pallet
Euronorm crate**



ROLL 300

Ext. diam. in mm (W x D x H):
715 x 810 x 1140
Int. diam. in mm (W x D x H):
556 x 635 x 845

Optional equipment



Size:

Roll Sec



ROLL 370

Ext. diam. in mm (W x D x H):
600 x 800 x 1670
Int. diam. in mm (W x D x H):
430 x 620 x 1370

Optional equipment



Size:

**Half Euro-pallet
Euronorm crate**



ROLL 500

Ext. diam. in mm (W x D x H):
715 x 850 x 1700
Int. diam. in mm (W x D x H):
545 x 665 x 1380

Optional equipment



Size:

Roll Sec UK



ROLL 550

Ext. diam. in mm (W x D x H):
660 x 950 x 1855
Int. diam. in mm (W x D x H):
468 x 770 x 1528

Optional equipment :



Size:

Roll container UK



ROLL 580

Ext. diam. in mm (W x D x H):
715 x 810 x 1900
Int. diam. in mm (W x D x H):
550 x 640 x 1600

Optional equipment



Size:

Roll container



ROLL 650

Ext. diam. in mm (W x D x H):
740 x 940 x 1840
Int. diam. in mm (W x D x H):
565 x 760 x 1500

Optional equipment



Size:

Roll container



ROLL 780

Ext. diam. in mm (W x D x H):
800 x 1000 x 1900
Int. diam. in mm (W x D x H):
610 x 820 x 1535

Optional equipment



Size:

**Special size
Euronorm crate**



ROLL 900

Ext. diam. in mm (W x D x H):
800 x 1200 x 1860
Int. diam. in mm (W x D x H):
610 x 1000 x 1493

Optional equipment



Size:

Euro-pallet



ROLL 1100

Ext. diam. in mm (W x D x H):
1000 x 1200 x 1720
Int. diam. in mm (W x D x H):
805 x 1000 x 1370

Optional equipment :



Size

ISO pallet



ROLL 1300

Ext. diam. in mm (W x D x H):
1100 x 1100 x 1930
Int. diam. in mm (W x D x H):
900 x 910 x 1570

Optional equipment :



Size

Asia pallet



ROLL 1410

Ext. diam. in mm (W x D x H):
1000 x 1200 x 2000
Int. diam. in mm (W x D x H):
805 x 1010 x 1680

Optional equipment :



Size

ISO pallet



Eutectic plate



Dry ice drawer



SIBER SYSTEM® Chilled or



SIBER SYSTEM® Mixed

Half Euro-pallet	600 x 800
Euronorm crate	600 x 400
Euro-pallet	800 x 1200
ISO pallet	1000 x 1200
Asia pallet	1100 x 1100

ROLL catering



ATP



MADE IN
FRANCE



ROLL 220

Ext. diam. in mm (W x D x H):
600 x 800 x 1130
Int. diam. in mm (W x D x H):
430 x 620 x 830
Optional equipment



Size:

**Half Euro-pallet
Euronorm crate**



ROLL 370

Ext. diam. in mm (W x D x H):
600 x 800 x 1670
Int. diam. in mm (W x D x H):
430 x 620 x 1370
Optional equipment



Size:

**Half Euro-pallet
Euronorm crate**



ROLL 550 15 G

Ext. diam. in mm (W x D x H):
660 x 950 x 1855
Int. diam. in mm (W x D x H):
468 x 715 x 1528
Optional equipment



Size:

Roll container UK



Eutectic plate



Dry ice drawer

Half Euro-pallet	600 x 800
Euronorm crate	600 x 400
Euro-pallet	800 x 1200
ISO pallet	1000 x 1200
Asia pallet	1100 x 1100

ROLL seafood



ATP



MADE IN
FRANCE



ROLL 670

Ext. diam. in mm (W x D x H):
800 x 1030 x 1720
Int. diam. in mm (W x D x H):
610 x 865 x 1280
Size:

Special size



ROLL 780

Ext. diam. in mm (W x D x H):
800 x 1012 x 1900
Int. diam. in mm (W x D x H):
610 x 820 x 1420
Size:

**Special size
Euronorm crate**



ROLL 900

Ext. diam. in mm (W x D x H):
800 x 1200 x 1860
Int. diam. in mm (W x D x H):
610 x 1000 x 1390
Size:

Euro-pallet



ROLL 1100

Ext. diam. in mm (W x D x H):
1000 x 1200 x 1720
Int. diam. in mm (W x D x H):
805 x 1000 x 1270
Size:

ISO pallet



ROLL 1410

Ext. diam. in mm (W x D x H):
1000 x 1200 x 2000
Int. diam. in mm (W x D x H):
805 x 1010 x 1580
Size:

ISO pallet

ROLL last mile



ROLL O'CITY 500

Ext. diam. in mm (W x D x H):

800 X 1200 X 1270

Int. diam. in mm (W x D x H):

610 X 950 X 890

Optional equipment :



Size

Euronorm crate

Euro-pallet



Eutectic plate

Half Euro-pallet	600 x 800
Euronorm crate	600 x 400
Euro-pallet	800 x 1200

NB : Do not hesitate to contact us for any adaptation to your trailer system



MADE IN
FRANCE

BAC RANGE



BAC RANGE

polyethylene BAC for all applications



ATP



MADE IN FRANCE



BAC 25

Ext. diam. in mm (W x D x H):
490 x 510 x 670

Int. diam. in mm (W x D x H):
280 x 320 x 400

Optional equipment



Size:
Special size



BAC 55

Ext. diam. in mm (W x D x H):
600 x 500 x 580

Int. diam. in mm (W x D x H):
415 x 315 x 410

Optional equipment



Size:
Quarter ISO pallet



BAC 70

Ext. diam. in mm (W x D x H):
680 x 560 x 850

Int. diam. in mm (W x D x H):
480 x 360 x 615

Optional equipment



Size:
Special size



BAC 130

Ext. diam. in mm (W x D x H):
800 x 600 x 715

Int. diam. in mm (W x D x H):
620 x 410 x 520

Optional equipment



Size:
**Half Euro-pallet
Euronorm crate**



BAC 160

Ext. diam. in mm (W x D x H):
800 x 600 x 1050

Int. diam. in mm (W x D x H):
580 x 370 x 700

Optional equipment



Size:
Half Euro-pallet



BAC 320

Ext. diam. in mm (W x D x H):
1200 x 800 x 930

Int. diam. in mm (W x D x H):
980 x 580 x 570

Optional equipment



Size:
Euro-pallet



BAC 420

Ext. diam. in mm (W x D x H):
1200 x 800 x 1050

Int. diam. in mm (W x D x H):
1000 x 600 x 700

Optional equipment



Size:
Euro-pallet



Eutectic plate



Dry ice drawer

Half Euro-pallet	600 x 800
Euronorm crate	600 x 400
Euro-pallet	800 x 1200
Quarter ISO pallet	500 x 600
ISO pallet	1000 x 1200

POLYESTER BAC

for transporting and storing dry ice



BAC 260

Ext. diam. in mm (W x D x H):
996 x 926 x 810

Int. diam. in mm (W x D x H):
800 x 720 x 455

Size:

Special size



BAC 480

Ext. diam. in mm (W x D x H):
1200 x 1000 x 970

Int. diam. in mm (W x D x H):
1000 x 800 x 600

Size:

ISO pallet



BAC 600

Ext. diam. in mm (W x D x H):
1200 x 1200 x 970

Int. diam. in mm (W x D x H):
1000 x 1000 x 600

Size:

Special size

TECHNICAL SPECIFICATIONS

ROLL & BAC

Polyethylene container materials

- Standard insulated container made of turquoise polyethylene.
- Rotomolded double-walled container.
- Insulation: polyurethane foam without a blowing agent injected between the walls.
- Excellent insulating capability, better insulation lifespan, shape memory and good impact resistance, food-grade, easy care (washable, easily repaired).
- Recyclable polyethylene.



Polyester container materials

- White insulated container made of a fibreglass/polyester composite.
- Outer and inner walls molded and assembled (laminated).
- Insulation: injected polyurethane foam.
- Excellent resistance to low temperatures, washable.
- Excellent insulating capability.
- Food-grade.



Feet and wheels

- Feet: round steel feet fixed on chassis with screws and washers, 2 diameters: 60 x 80 mm
- Wheels: zinc-plated pressed steel fork, plate fitting, polyamide band for reduced wear on a rubber centre for reduced noise
- Standard ROLL container with wheels (2 fixed, 2 swivel wheels)
- Standard BAC container with feet



Frame

- Zinc-coated chassis
- Embedded in the underside of the container, reducing impacts and facilitating the changing of feet and wheels



OPTIONS

ROLL & BAC

Markings and colours: please enquire

- Possibility of molded-in logo on request (but requires dedicated tooling and therefore a minimum order)
- Container available in custom colours on request (with a minimum order).
- Laser-engraved custom identification plate on request (logo/text).



RAL 6021

RAL 5012 RAL 1034

REFRIGERATION SYSTEMS

ROLL & BAC

❄️ Eutectic plates

OLIVO makes its own eutectic plates and fluids (+21°C, 0°C, -3°C, -12°C, -17°C, -21°C and -26°C). The most commonly used eutectic plates are:

- +15°C/+25°C for cosmetics, chocolates, wines, pharmaceuticals.
- 0°C for refrigerated pharmaceuticals.
- -3°C for chilled foods.
- -21°C for frozen goods.

Placed in the top of the insulated container, the eutectic plate releases the thermal energy it stored up when it was frozen in the freezing chamber.

Model	Dimensions in mm	Weight in kg +/- 8%
TOP 900	610 x 380 x 43	9,3
TOP 70	530 x 410 x 55	9
TOP 370	620 x 420 x 35	8,8
TOP 780	650 x 402 x 35	8,5
TOP 130	510 x 445 x 35	6,9
TOP 580	595 x 316 x 35	5,4
GASTRO 1/1	530 x 325 x 35	5,3
TOP 25	304 x 250 x 45	2,4
TOP 55	355 x 225 x 32	1,9
GASTRO 1/3	325 x 176 x 33	1,4
500 CC	220 x 148 x 20	0,6
250 CC	195 x 90 x 20	0,3
TOP 64	364 x 170 x 20	1,05



❄️ Dry ice

Because it sublimates at a low temperature, dry ice is an extremely powerful refrigerant and is mainly used for transporting frozen goods.

It comes in different forms: blocks, slices, pellets or snow.

OLIVO offers a dry ice drawer for each of its models.

❄️ SIBER SYSTEM® chilled or frozen

❄️ SIBER SYSTEM®

For large-scale operations, OLIVO offers an automated cryogenic refrigeration process, the SIBER SYSTEM®.

The warehouse produces its own dry ice from liquid CO2 stored in refrigerated tanks.

The dry ice snow is measured out and injected directly into the tank located in the top section of the ROLL insulated container, thereby ensuring chilled or frozen products remain at the right temperature and the cold chain unbroken.

SIBER SYSTEM® is patented by OLIVO.



BOX RANGE



BOX RANGE

for last mile logistics



BOX 34

Ext. diam. in mm (W x D x H): **555 x 360 x 331**

Int. diam. in mm (W x D x H): **490 x 300 x 255**

Optional equipment



Size:

Special size



BOX35*

Ext. diam. in mm (W x D x H): **570 x 370 x 317**

Int. diam. in mm (W x D x H): **510 x 310 x 230**

Optional equipment



Size:

Special size



BOX64

Ext. diam. in mm (W x D x H): **595 x 395 x 455**

Int. diam. in mm (W x D x H): **505 x 320 x 370**

Optional equipment



Size:

Quarter Euro-pallet



Eutectic plate



Dry ice packs/slices



Minicryo®

Quarter Euro-pallet

600 x 400

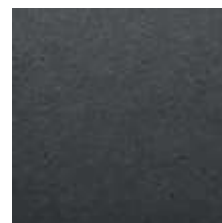
** Available for a volume up to 250 pieces*

TECHNICAL SPECIFICATIONS

BOX

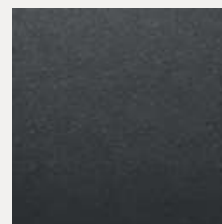
EPP BOX materials

- Expanded polypropylene (EPP): closed-cell polypropylene foam.
- Insulation: EPP
- 100% recyclable, good impact resistance, lightweight, mono-material, easy to handle, excellent thermal insulating capacity, food-grade.



Markings and colours

- Molded-in logos (subject to minimum order).
- Custom colours (subject to minimum order).



REFRIGERATION SYSTEMS

BOX

❄️ Eutectic plates

OLIVO makes its own eutectic plates and fluids (+21°C, 0°C, -3°C, -12°C, -17°C, -21°C et -26°C). The most commonly used eutectic plates are:

- +15°C/+25°C for cosmetics, chocolates, wines, pharmaceuticals.
- 0°C for refrigerated pharmaceuticals.
- -3°C for chilled foods.
- -21°C for frozen goods.

Placed in the top of the BOX, the eutectic plate releases the thermal energy it stored up when it was frozen in the freezing chamber.

Model	Dimensions in mm	Weight in kg +/- 8%
500 CC	220 x 148 x 20	0,6
250 CC	195 x 90 x 20	0,3
TOP 64	364 x 170 x 20	1,05
TOP 55	355 x 225 x 32	1,9

❄️ Dry ice

Because it sublimates at a low temperature, dry ice is an extremely powerful refrigerant and is mainly used for transporting frozen goods.

It comes in different forms: blocks, slices or snow.

Use OLIVO BOX totes to transport frozen goods with dry ice slices or blocks in bags.



❄️ MINICRYO®

Here the principle of cryogenic refrigeration and the SIBER SYSTEM® cold service station have been transposed for use with BOX insulated tote boxes, a size of container ideally suited to home deliveries and other types of last mile logistics.

The main advantage of the MINICRYO® cryogenic system is that it produces cold on demand, just the amount of dry ice you need, no more, no less.

This on-demand cold production has been made possible by the SNOWDROP® machine, which produces dry ice snow by releasing pressurised liquid CO2 when it is needed.

The innovative MINICRYO® system can be fully automated on request (custom case study).

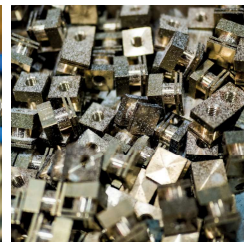
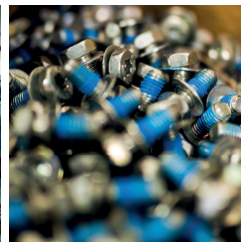


MAINTENANCE

ROLL, BAC & BOX

Do not hesitate to contact us for any question about your equipment maintenance and for any spare part change. We will guide you in your products' references choice.

Olivo is also offering maintenance courses to let you discover the right gestures and operations necessary to your insulated container's maintenance. Contact our sales team for designing a tailored made program fitted to your real needs.




CONTACT US

to know more

Olivo Cold Logistics

 ZA Charles Chana,
1 Boulevard des Mineurs,
42230 Roche-La-Molière, France

 Monday to Thursday
7:30 - 12:00 to 13:30 - 16:00
Friday
7:30 - 12:00

 +33 (0)4 77 90 68 63

 contact@olivo.eu

 www.olivo.eu



DOWNLOAD THE TECHNICAL DATA

of our solutions directly on our website !



Where are we ?



